

Versatile and affordable for any project—Lyon’s multipurpose base makes it a great option for any solution.

Lyon
Tables



Lyon



features

- Laminate top with 3mm matching PVC edgeband.
- Aluminum base with 13 gauge tube column.
- Round, square or rectangle table shapes.
- X and T-Bases on standard tables.
- Flip-top is available on rectangle tops with C or T-Base configurations.
- Hand release mechanism is standard on all C or T-Base configurations.
- Flip-top tables with silver finish receive silver flip mechanism. All other base finishes receive black flip mechanism.
- Adjustable leveling glides on non-caster bases.
- Available in 30", 36", 42", 48" and 60" sizes. Rectangle T-base table available in additional 72", 84", and 96" sizes. Flip-top available in 36", 42", 48" and 60" sizes.
- Optional locking casters available for flip-tops.

statement of line



Round
Available in 42" Bar Height



Square
Available in 42" Bar Height



Rectangle X-Base
Available in 42" Bar Height



Rectangle T-Base
Available in 42" Bar Height

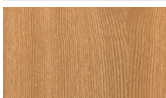


**Rectangle T-Base,
Flip-Top w/Casters**



**Rectangle C-Base,
Flip-Top w/ Casters**

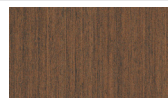
laminite finish



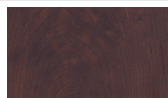
Oak



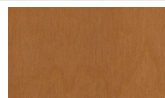
Natural Maple



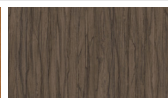
Chestnut Maple



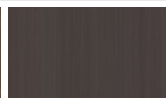
Cocoa Maple



Cinnamon Noche Maple



Driftwood Maple



Maduro Maple

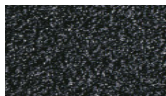


Slate

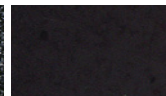


Linen

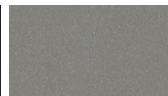
metal finish



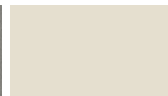
Black Wrinkle



Gloss Black



Silver



Soft White

Color Disclaimer

Please order actual material samples for specifying purposes. Color accuracy is not guaranteed with these images.