

## Lotus Approved Textiles

Thank you for your interest in specifying Lotus. We believe the specification process should be as easy and streamlined as possible, all while achieving the highest possible level of quality. Our experience has shown us that due to textile composition differences not all fabrics perform well on all products and, as such, our designers have chosen the most ideal fabrics for use on Lotus referred to as Lotus Approved Textiles.

### WRINKLE, PUDDLE, OR PUCKER

Pulling design inspiration from a formed lounge chair and plush bean bag, Lotus's softness and looser fabric fit will naturally cause wrinkles over time. We are embracing these wrinkles as a design feature of Lotus. We believe the Lotus Approved Textiles selections will provide the best results both initially and over time to accentuate the product's effortless look and feel.

We know there may be interest in using fabrics outside of the Lotus Approved Textiles and are happy to test fabrics as requested. We want to make sure the RT London products you specify look their absolute best but would like to emphasize that non-Lotus Approved Textiles may exhibit excessive wrinkling or may puddle or pucker in various areas of the product.

Please contact [designservices@rtlondon.com](mailto:designservices@rtlondon.com) with questions.

## lotus approved textiles

---

Culp Kedar  
Culp Ridgecrest  
Culp Montgomery

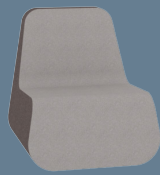
Culp Dorset  
Culp Connelly  
Culp Dillon

Mayer Fedora  
Mayer Caressa  
Mayer Lavish

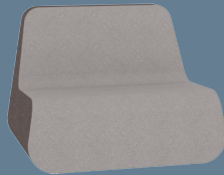
Camira Blazer

## statement of line

---



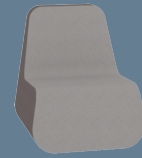
35d | 31w | 35h



35d | 43w | 35h



23d | 31w | 16h



31d | 27w | 33h



19d | 27w | 16h

## handle options

---



Black



Brown



Grey

**Blazer**

[www.camirafabrics.com](http://www.camirafabrics.com)



**Wesley**  
CUZ82



**Eynesbury**  
CUZ2W



**Fairfield**  
CUZ47



**Dartmouth**  
CUZ2Q



**Goldsmith**  
CUZ39



**Penola**  
CUZ2X



**Silverdale**  
CUZ28



**Wellington**  
CUZ13



**Bryanston**  
CUZ53



**Plymouth**  
CUZ1R



**Marymount**  
CUZ3C



**St Andrews**  
CUZ86



**Magdalene**  
CUZ21



**Camphill**  
CUZ1K



**Aston**  
CUZ02



**Newcastle**  
CUZ1W



**Surrey**  
CUZ1E



**Scottsdale**  
CUZ3E



**Montcrest**  
CUZ3A



**Vassar**  
CUZ2U



**Edinburgh**  
CUZ1Y



**Silcoates**  
CUZ30



**Holyoke**  
CUZ2T



**Hull**  
CUZ1P



**Abertay**  
CUZ3B



**Glenalmond**  
CUZ62



**Napier**  
CUZ08

Additional colors are available. Please refer to the Camira Fabrics website.

---

## Blazer

Blazer is a classic pure new wool upholstery fabric with a billiard cloth felted finish. The fabric is made from premium New Zealand lambswool and benefits from complete integrity right from individual sheep farms to the finished fabric.

**Made by Camira.**

---

## Technical information



---

### Composition

100% Pure New Wool. Non metallic dyestuffs

---

### Environmental

Rapidly renewable and compostable

---

### Width

54 inches minimum

---

### Abrasion Resistance\*

ASTM D4157 Wyzenbeek method

Heavy Duty Upholstery independently certified to  $\geq 75,000$  double rubs

Covered by a full and comprehensive 10 year guarantee (full details available)

---

### Flammability

California Technical Bulletin 117 - 2013

NFPA 260 + UFAC Class 1

BS 7176 Low Hazard

ASTM E84 Class 1 or A (Adhered)

ASTM E84 Class 1 or A (Un-adhered)

*Note: Flammability performance is dependent on components used.*

---

### Cleaning code

W/S

Clean with water-based cleaning agent or solvent: Depending on the stain, you can use a dry-cleaning solvent, the foam of a mild detergent, or upholstery shampoo.

\*Camira recognizes that the number of Wyzenbeek double rubs does not reflect the actual wear performance of fabrics. We're so confident in the durability of our products that we provide a robust 10 year guarantee (full details available). This product is externally certified, details of which are on our website and available from our customer services team.

Batch to batch variations in shade may occur within commercial tolerances. We reserve the right to alter technical specifications without notice. The Unregistered Design Rights and the Copyright in all designs are the exclusive property of Camira Fabrics Limited.

**RT LONDON®**

**camira**

For additional information or sample requests visit:

[www.camirafabrics.com](http://www.camirafabrics.com)

Samples can also be requested by email at:

[memos@camirafabrics.com](mailto:memos@camirafabrics.com)

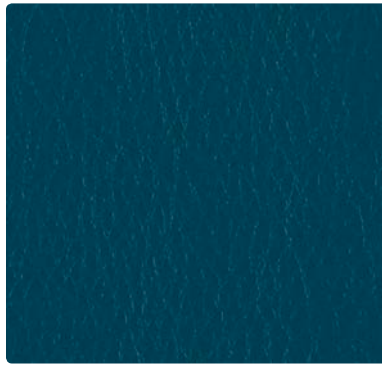
# FEDORA Grade 2

# CARESSA Grade 3

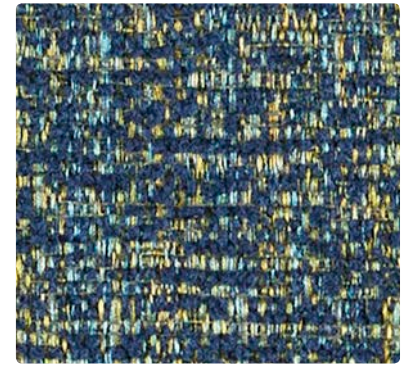
# LAVISH Grade 4



621-014  
Indigo



CA-114  
Pacific



WC969-004  
Lagoon



621-002  
Topaz



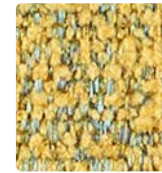
621-019  
Tangelo



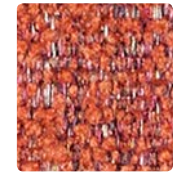
CA-032  
Lemon



CA-039  
Tangerine



WC969-002  
Sunflower



WC969-009  
Ember



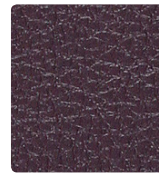
621-001  
Ruby



621-008  
Plum



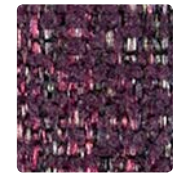
CA-021  
Red Pepper



CA-005  
Aubergine



WC969-001  
Crimson



WC969-005  
Wildberry



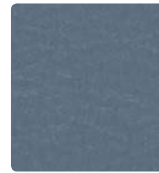
621-053  
Aegean



621-004  
Midnight



CA-094  
Calypso



CA-064  
Cerulean



WC969-026  
Cloud



WC969-014  
Turquoise



621-013  
Citron



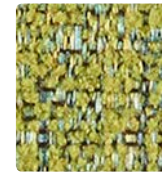
621-003  
Cactus



CA-103  
Lime



CA-113  
Jade



WC969-003  
Avocado



WC969-013  
Peacock



621-036  
Dapper



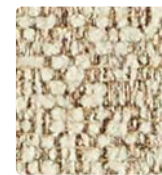
621-017  
Fawn



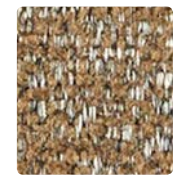
CA-107  
Pebble



CA-030  
Taupe



WC969-007  
Ecru



WC969-000  
Mocha



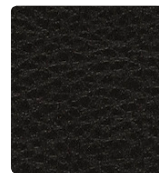
621-016  
Charcoal



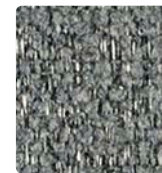
621-006  
Bitumen



CA-026  
Granite



CA-006  
Black



WC969-016  
Thunder



WC969-006  
Graphite

# TECHNICAL INFORMATION

Pattern 54"	Content and Backing	Certifications	Weight/ Linear Yd.	Pattern Repeat	Finish	Abrasion Wyzenbeek	Light-Fastness	Flammability	Cleaning Code	Grade
<b>CARESSA FR</b>	80% Vinyl Phthalate Free face, 20% Polyester backing	GREENGUARD	29 oz.	None	Soil & Stain Resistant Top Coat with Ink Resistant Technology	650,000 <sup>^</sup> Double Rubs	1000 hours	Cal. 117-2013 NFPA 260/UFAC Class 1 ASTM E84 (Adhered & Unadhered) Class 1 or A Boston Fire Dept. Code FMVSS 302 IMO A.652(16) 8.2 & 8.3 IMO FTP 2010 Part 8, 3.1 & 3.2 NY & NJ Port Authority	WS, BC, CFC	2
<b>FEDORA</b> <i>Directional</i> <i>Multi-purpose*</i>	100% Polyester Backing: Polyester	GREENGUARD Gold	17.2 oz.	None	Stain Repellent-PFOA Free	100,000 Double Rubs	40 hours	Cal. 117-2013 NFPA 260/UFAC Class 1 ASTM E84 (Unadhered) Class 1 or A	W	1
<b>LAVISH</b> <i>Directional</i>	100% Polyester Backing: Crypton®	GREENGUARD Gold	22.98 oz.	None	Crypton® with Antimicrobial Silver Ion Technology	79,000 Double Rubs	40 hours	Cal. 117-2013 NFPA 260/UFAC Class 1	C, BC	3

## REDUCED ENVIRONMENTAL IMPACT

These products are GREENGUARD Certified or GREENGUARD Gold Certified for low chemical and particle emissions to UL standard UL 2818 and may contribute to LEED certification. For complete information visit [mayerfabrics.com](http://mayerfabrics.com) and [UL.com/gg](http://UL.com/gg).

### Caressa FR

Phthalate Free Tris Free

## CARE AND CLEANING INFORMATION

W: Water-Based Cleaner

WS: Water/Solvent Cleaner

BC: Bleach Cleanable – 1 part bleach, 9 parts water = 10% bleach, 90% water solution. Do not clean/disinfect fabric for longer than 10 minutes using the 10% bleach solution. Always rinse promptly with clean water after applying the bleach solution. Failure to do so will void any and all warranties.

C: Crypton® Cleaning

CFC: Coated Fabrics Cleaning – Refer to Mayer website for complete cleaning info.

For additional care and cleaning information by pattern, please refer to the Mayer Fabrics website.

## DYE TRANSFER DISCLAIMER

Certain clothing and accessory dyes (such as those used on denim jeans) may migrate to lighter colors. This phenomenon is increased by humidity and temperature and is irreversible. Mayer Fabrics will not assume responsibility for dye transfer caused by external contaminants. Please check compatibility when using this product in combination with painted or varnished surfaces.

## ADDITIONAL INFORMATION

**CAL TB 133:** All patterns may comply with California Technical Bulletin 133 when combined with appropriate components.

**^Abrasion:** Multiple factors affect fabric durability and appearance retention, including end-user application and proper maintenance. Wyzenbeek results above 100,000 double rubs have not been shown to be a reliable indicator of increased fabric lifespan.

**Custom Capabilities:** All patterns can be custom colored. Minimum yardage applies.

**Specifications:** Specifications are correct at the time of printing. Additional specifications are available on our website.

**Digital Swatch Card Color Matching:** Due to color variations on different monitors and color printers, actual swatch colors may vary slightly. Please request a memo sample from Mayer Fabrics to ensure proper color representation.

**\*Fedora:** A multi-purpose fabric that can be used for upholstery, panels, & wrapped walls.



These fabrics meet or exceed these ACT performance guidelines.  
\*Certification Marks owned by ACT®

### Fedora



Water and Stain Repellent Finish

### Lavish



CRYPTON®

# TexTile3D™

by Mayer Fabrics

For additional colors, pre-approved patterns, grade-ins, samples and specifications, please refer to the Mayer TexTile3D link.

**RT LONDON®**

**M**  
**MAYERFABRICS**

### Ridgecrest



Putty



Beach



Tide Pool



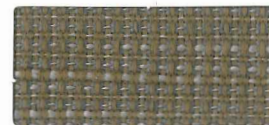
Sterling



Bittersweet



Meadow



Mink



Chocolate



Ruby



Midnight



Ink

### Montgomery



Mushroom



Red Pepper



Lime



Sterling



Melon



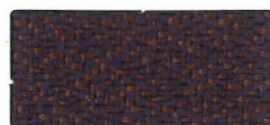
Bermuda



Iron



Cocoa



Grape



Midnight



Black

### Kedar



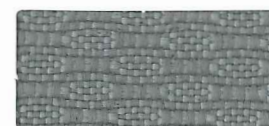
Taupe



Poppy



Espresso



Light Grey



Burgundy



Indigo



Iron

## Fabric Specifications and Technical Data

	Kedar	Montgomery	Ridgecrest
Content;	100% Polyester	100% Polyester	100% Polyester
Backing;	Synthetic latex blend	Synthetic latex blend	Synthetic latex blend
Width;	54"	54"	54"
Weight;	15.6 ozs.	10.72 ozs.	12.96 ozs.
Abrasion;	60,000	100,000	100,000
Flammability;	CA 117-2013	CA 117-2013	CA 117-2013
Passes;	UFAC Class I NFPA 260 Class I	UFAC Class I NFPA 260 Class I	UFAC Class I NFPA 260 Class I
Lightfastness;	Class 4/ 40 Hours	Class 4/ 40 Hours	Class 4/ 40 Hours
Colorfastness;	Wet: Class 3 Dry: Class 4	Wet: Class 4 Dry: Class 4	Wet: Class 4 Dry: Class 5
Pilling Resistance;	Class 4	Class 4	Class 4
Breaking Strength;	Warp: 80 lbs. Weft: 74 lbs.	Warp: 75 lbs. Weft: 69 lbs.	Warp: 80 lbs. Weft: 68 lbs.
Seam Slippage;	Warp: 86 lbs. Weft: 74 lbs.	Warp: 35 lbs. Weft: 35 lbs.	Warp: 84 lbs. Weft: 72 lbs.
Cleaning Code;	W	W	W
Country of Origin;	Columbia, SA	China	USA

For samples or further information, please contact::

Culp, Inc.

Contract Fabrics

1823 Eastchester Drive

High Point, NC 27265

Phone: (336)-889-5161

Fax: (336)-889-7848

[www.culpcontract.com](http://www.culpcontract.com)

**CULP**  
CONTRACT

2-5-2015



Dorset



Flax



Camel



Copper



Cayenne



Cherry



Mulberry



Taupe



Balsa



Soda



Charcoal



Silver



Platinum



Ash



Avocado



Ocean Blue



Smoke Blue



Denim



Blueberry



Black Indigo



Black

Connolly



Parakeet



Dove



Wren



Owl



Chick



Peacock



Parakeet



Bluebird



Parrot



Bluejay



Hawk



Crow



Firefinch

## Connelly

Content:	100% Polyester
Backing:	Synthetic Latex Blend
Finish:	i-clean™, a high performance stain and moisture repellent, based on Nano technology.
Weight:	16.8 oz. per linear yard
Width:	54"
Abrasion:	Heavy Duty – 95,000 Cycles (Wyzenbeek – Cotton Duck Abradant) (ASTM D4157)
Light Fastness:	Class 4/40 hrs. min. (AATCC16A)
Color Fastness:	Class 4 (ASTM D3597, AATCC8) Wet Class 4 (ASTM D3597, AATCC8) Dry
Physical Properties:	Class 4 (ASTM D3511) Brush Pill 213 lbs. warp, 162 lbs. weft (ASTM D5034) Breaking Strength 106 lbs. warp, 100 lbs. weft (ASTM D4034) Seam Slippage
Passes:	California Tech. Bulletin #117-2013 UFAC Class I NFPA 260 Class I
Cleanability:	W – Water based cleaners may be used.  This fabric is made in China.

## Dorset

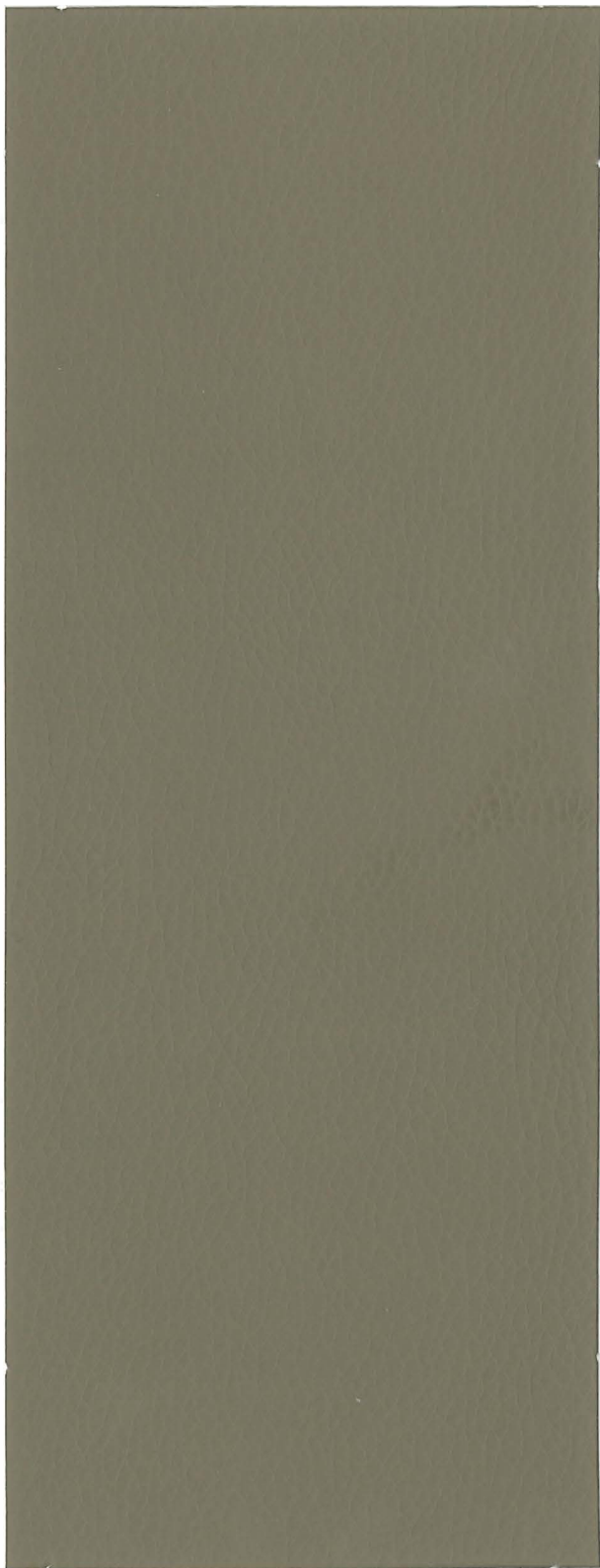
Content:	100% Polyester
Backing:	100% Polyester
Finish:	i-clean™, a high performance stain and moisture repellent, based on Nano technology.
Weight:	17.28 oz. per linear yard
Width:	54"
Abrasion:	Heavy Duty – 55,000 Cycles (Wyzenbeek – Cotton Duck Abradant) (ASTM D4157)
Light Fastness:	Class 4/40 hrs. min. (AATCC16A)
Color Fastness:	Class 3 (ASTM D3597, AATCC8) Wet Class 4 (ASTM D3597, AATCC8) Dry
Physical Properties:	Class 4 (ASTM D3511) Brush Pill 97 lbs. warp, 94 lbs. weft (ASTM D5034) Breaking Strength 41 lbs. warp, 38 lbs. weft (ASTM D4034) Seam Slippage
Passes:	California Tech. Bulletin #117-2013 UFAC Class I NFPA 260 Class I
Cleanability:	W – Water based cleaners may be used.  This fabric is made in China.

**CULP**  
CONTRACT

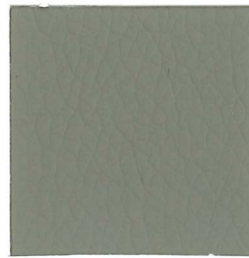
For samples or further information, please contact:  
Culp, Inc.  
Contract Fabrics  
1823 Eastchester Drive  
High Point, NC 27265  
Phone: (336) 889-5161 • Fax: (336) 899-7848  
www.culpcontract.com

5-01-2018

# Dillon



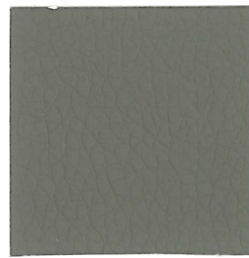
Balsa



Quarry



Steel



Stratus



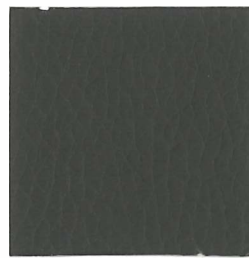
Lucid



Tusk



Storm



Graphite



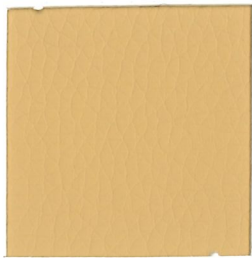
Iron



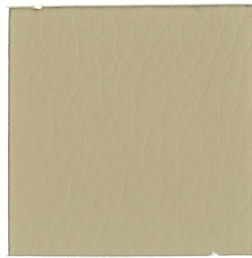
Java



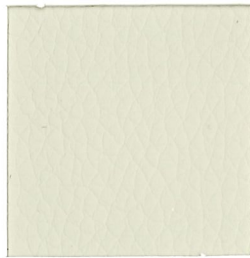
Black



Straw



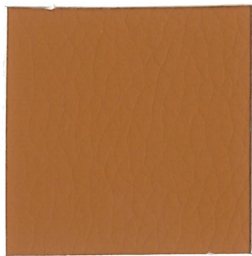
Buff



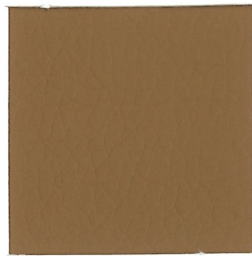
Sandy



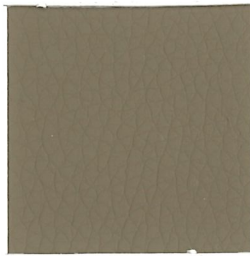
Snow



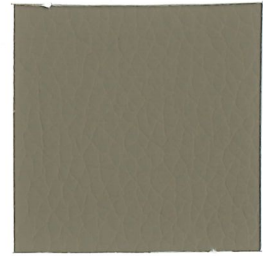
Fiesta



Luggage



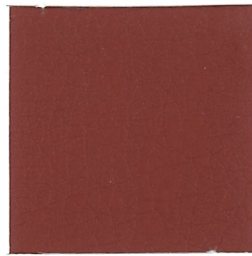
Safari



Balsa



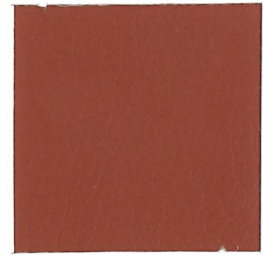
Bordeaux



Cordovan



Lipstick



Chili



Williamsburg



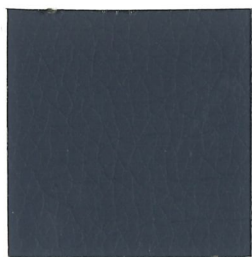
Baltic



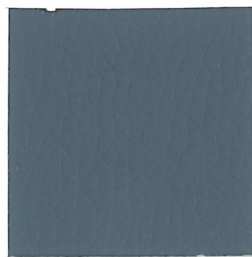
Sage



Apple Green



Thunder



Nimbus



Ocean



Grape

## Dillon

Content:	100% Polyurethane
Backing:	70% Polyester, 30% Cotton
Finish:	Antimicrobial - silver based ion technology
Weight:	20.3 oz. per linear yard
Width:	54"
Environmental Benefit:	PVC Free Phthalate - compliant CPSC sec. 108 Lead - compliant CPSC sec. 101
Abrasion:	Heavy Duty - Exceeds 200,000 Cycles (Wyzenbeek - #8 Cotton Duck Abradant) (ASTM D4157)
Light Fastness:	Class 4/200 hrs. min. (AATCC 16A)
Color Fastness:	Class 5 (ASTM D3597, AATCC 8) Wet Class 5 (ASTM D3597, AATCC 8) Dry
Physical Properties:	Class 5 (ASTM D3511) Brush Pill 130 lbs. warp, 120 lbs. weft (ASTM D5034) Breaking Strength 61 lbs. warp, 81 lbs. weft (ASTM D4034) Seam Slippage Pass (CFFA 6a) Cold Crack Pass (ISO 1419) 5 weeks
Passes:	California Tech. Bulletin #117-2013 UFAC Class I NFPA 260 Class I MVSS 302 Pass IMO A. 652(16) 8.2
Cleanability:	WS - Both water and solvent based solutions.

This fabric is made in China.

For samples or further information, please contact:

Culp, Inc.

Contract Fabrics

1823 Eastchester Drive

High Point, NC 27265

Phone: (336)-889-5161

Fax: (336)-899-7848

[www.culpcontract.com](http://www.culpcontract.com)

**CULP**  
CONTRACT

5-21-2018