

Designed by Joey Ruiter, Sadie has a minimalistic approach to the design and focuses on functionality. Available in chair or barstool and with or without upholstery.

**Sadie**  
Chairs



## Sadie



### features

- Designed by Joey Ruiters.
- 18 gauge steel frame.
- Wooden back and seat made of 1" saddled ply.
- Premium nylon glides.
- 1" of high resilience upholstery foam.

### statement of line

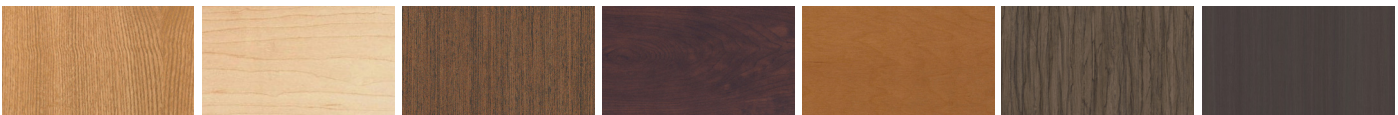


**837-WD - Chair,  
Wood Seat & Back**

**837BS-WD - Barstool,  
Wood Seat & Back**

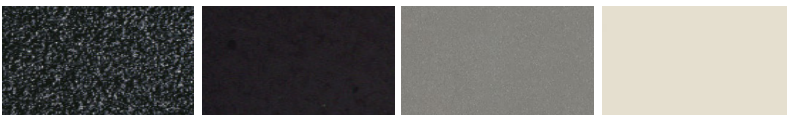
Product not shown: 837 - Chair, Wood Back, Upholstered Seat; 837-UPH - Chair, Upholstered Seat & Back; 837BS - Barstool, Wood Back, Upholstered Seat; 837BS-UPH - Barstool, Upholstered Seat & Back

### wood finish



Oak      Natural Maple      Chestnut Maple      Cocoa Maple      Cinnamon Noche Maple      Driftwood Maple      Maduro Maple

### metal finish



Black Wrinkle      Gloss Black      Silver      Soft White

### Color Disclaimer

Please order actual material samples for specifying purposes. Color accuracy is not guaranteed with these images.