

# Blazer & Main Line Flax



**RT** LONDON®

**camira**



# Benefits of wool

---

Wool is Mother Nature's wonder fiber for textiles - a natural evolution which is ultra intelligent, highly complex, supremely technical, rapidly renewable and environmentally sustainable. It has evolved from nature over millions of years, giving us the most versatile textile raw material imaginable with amazing performance benefits.

## Wool benefits include:

- Wool is 100% natural, renewable, and sustainable. It is also fully compostable and will biodegrade within one year whereas synthetic fibers, such as polyester, take hundreds of years to decompose.
- Wool textiles look good longer than synthetics due to the natural crimp and scales, which help dust and dirt from penetrating the surface.
- Wool absorbs harmful VOCs in the air, improving indoor air quality which creates healthier working and living environments.
- Due to its stretch, wool is suited perfectly for soft seating and will mold itself to large pieces of statement furniture. It also retains its shape well.
- Wool is a feel-good fiber, acting as a temperature regulator. It is the perfect fiber for all seasons, providing a personal air-conditioning system, so that "when its hot, wool is not."
- Wool is inherently flame retardant without any added chemicals.
- Bast fibers (flax) blend very well with wool, and pick up dyes differently than wool which create unique color combinations.
- Wool is one of the easiest fabrics to clean, as it has inherent stain repellent properties. Vacuuming and lukewarm water may be enough, or you can add in a water-based cleaning agent.





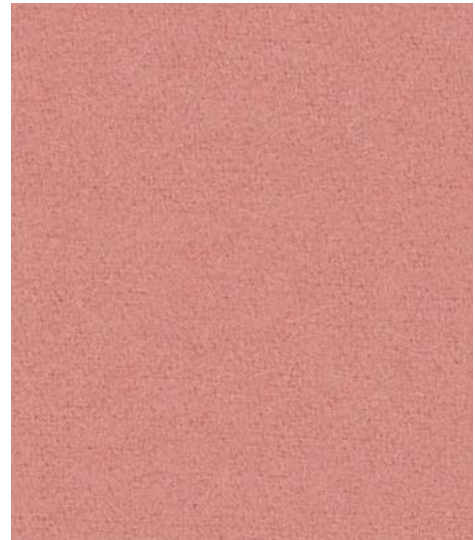
**Caterham**  
CUZ4A



**Fairfield**  
CUZ47



**Dartmouth**  
CUZ2Q



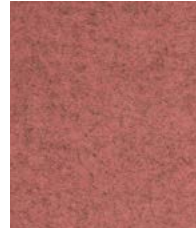
**Derby**  
CUZ4Q



**Edgehill**  
CUZ90



**Malvern**  
CUZ3L



**Ackworth**  
CUZ3P



**Sidcot**  
CUZ3V



**Moreton**  
CUZ3W



**Chichester**  
CUZ4C



**Falmouth**  
CUZ4M



**Lucton**  
CUZ3M



**Grantham**  
CUZ4E



**Cardiff**  
CUZ1N



**Stowe**  
CUZ3R



**Camphill**  
CUZ1K



**Moray**  
CUZ4K



**Glenalmond**  
CUZ62



**Oxford**  
CUZ09



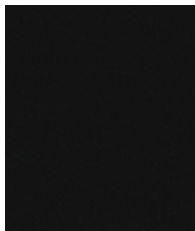
**Bodmin**  
CUZ4F



**Norland**  
CUZ4J



**Plymouth**  
CUZ1R



**Napier**  
CUZ08



**Silcoates**  
CUZ30



**Trevelyan**  
CUZ31



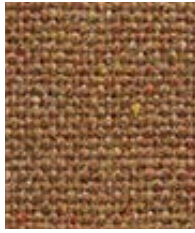
**Stonebridge**  
CUZ4W



**Silverdale**  
CUZ28

Visit [www.camirafabrics.com](http://www.camirafabrics.com) to view the full range of colors available in each pattern.  
Photographic fabric scans are not color accurate. Always request actual fabric samples before ordering.

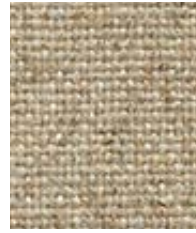




**Perivale**  
MLF59



**Bank**  
MLF23



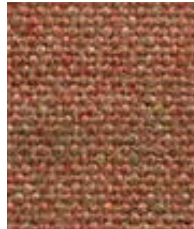
**Upminster**  
MLF20



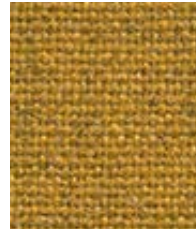
**Morden**  
MLF12



**Barking**  
MLF45



**Alperton**  
MLF43



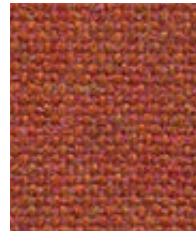
**Tooting**  
MLF17



**Blackwall**  
MLF46



**Parsons**  
MLF14



**Balham**  
MLF44



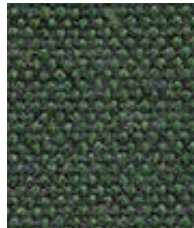
**Barbican**  
MLF03



**Brixton**  
MLF47



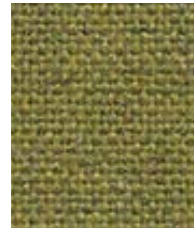
**Hornchurch**  
MLF55



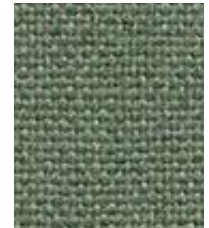
**Greenford**  
MLF32



**Moorgate**  
MLF57



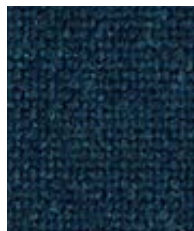
**Woodford**  
MLF67



**Greenwich**  
MLF52



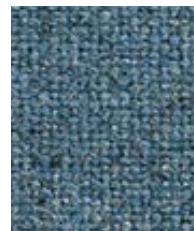
**Tower**  
MLF36



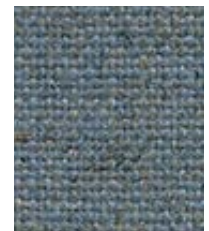
**Embankment**  
MLF50



**Clapham**  
MLF49



**Epping**  
MLF51



**Waterloo**  
MLF21



**Edgware**  
MLF28



**Watford**  
MLF65



**Richmond**  
MLF62



**Shadwell**  
MLF63



**Redbridge**  
MLF61

Visit [www.camirafabrics.com](http://www.camirafabrics.com) to view the full range of colors available in each pattern.  
Photographic fabric scans are not color accurate. Always request actual fabric samples before ordering.

# Blazer

Made from premium New Zealand lambswool, Blazer is a timeless wool felt fabric which embodies everything we do: we spin the yarn, weave the cloth, mill the fabric and dye it into our most extensive palette of 77 colorways. Sustainable by design, Blazer is natural and renewable, backed by an independently verified Environmental Product Declaration and certified to the EU Ecolabel.

## Composition

100% Pure New Wool

## Environmental

Certified to the EU Ecolabel  
Certified to Indoor Advantage™ Gold  
Environmental Product Declaration - Natural fabric

## Width

54 inches minimum

## Abrasion Resistance\*

ASTM D4157 Wyzenbeek method  
Heavy Duty Upholstery independently certified to  $\geq 75,000$  double rubs  
Covered by a full and comprehensive 10 year guarantee (full details available)

## Flammability

California Technical Bulletin 117  
NFPA 260 + UFAC Class 1  
BS 7176 Low Hazard  
ASTM E84 Class 1 or A (Adhered)  
ASTM E84 Class 1 or A (Un-adhered)  
IMO FTP Code (Part 8)

### Optional, please specify when ordering:

NFPA 701 when FR treated

*Note: Flammability performance is dependent on components used.*

## Cleaning code

W/S

Clean with water-based cleaning agent or solvent: Depending on the stain, you can use a dry-cleaning solvent, the foam of a mild detergent, or upholstery shampoo.

\*Camira recognizes that the number of Wyzenbeek double rubs does not reflect the actual wear performance of fabrics. We're so confident in the durability of our products that we provide a robust 10 year guarantee (full details available). This product is externally certified, details of which are on our website and available from our customer services team.

Batch to batch variations in shade may occur within commercial tolerances. We reserve the right to alter technical specifications without notice. The Unregistered Design Rights and the Copyright in all designs are the exclusive property of Camira Fabrics Limited.



# Main Line Flax

A beloved Camira textile, Main Line Flax is made from the best nature has to offer. A blend of pure wool and harvested flax creates this multi-tonal, inherently flame-retardant fabric.

## Composition

75% Pure New Wool, 25% Flax

## Environmental

Certified to the EU Ecolabel  
Certified to Indoor Advantage™ Gold  
Environmental Product Declaration - Natural fabric

## Width

54 inches minimum

## Abrasion Resistance\*

ASTM D4157 Wyzenbeek method  
Heavy Duty Upholstery independently certified to  $\geq 100,000$  double rubs  
Covered by a full and comprehensive 10 year guarantee (full details available)

## Flammability

California Technical Bulletin 117  
NFPA 260 + UFAC Class 1  
BS 7176 Medium Hazard  
ASTM E84 Class 1 or A (Adhered)  
ASTM E84 Class 2 or B (Un-adhered)  
IMO FTP Code (Part 8)

*Note: Flammability performance is dependent on components used.*

## Cleaning code

W/S

Clean with water-based cleaning agent or solvent: Depending on the stain, you can use a dry-cleaning solvent, the foam of a mild detergent, or upholstery shampoo.

\*Camira recognizes that the number of Wyzenbeek double rubs does not reflect the actual wear performance of fabrics. We're so confident in the durability of our products that we provide a robust 10 year guarantee (full details available). This product is externally certified, details of which are on our website and available from our customer services team.

Batch to batch variations in shade may occur within commercial tolerances. We reserve the right to alter technical specifications without notice. The Unregistered Design Rights and the Copyright in all designs are the exclusive property of Camira Fabrics Limited.



# camira

For additional information or sample requests visit: [www.camirafabrics.com](http://www.camirafabrics.com)  
Samples can also be requested by email at: [memos@camirafabrics.com](mailto:memos@camirafabrics.com)