



INTERACTIVE SEATING COORDINATES

---

**RT** LONDON®

**MAYER**  
FABRICS



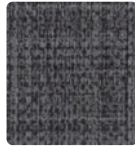
**CONNECT**  
635-006 Charcoal



**LYRIC**  
LI-016 Fossil



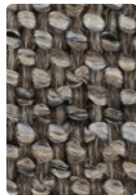
**LYRIC**  
LI-000 Woodland



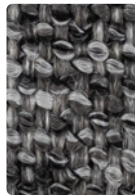
**LYRIC**  
LI-006 Obsidian



**LANCASTER**  
332-006 Mineral



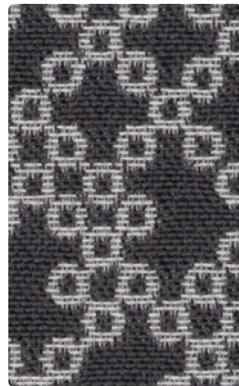
**LANCASTER**  
332-010 Truffle



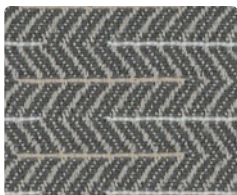
**LANCASTER**  
332-016 Masonry



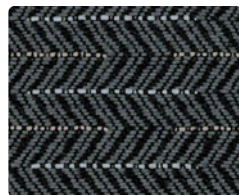
**LOOP**  
637-007 Mineral



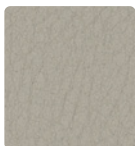
**LOOP**  
637-006 Smoke



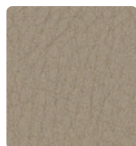
**JIVE**  
461-016 Pewter



**JIVE**  
461-006 Smoke



**NOBLE**  
NB-036 Dove



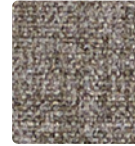
**NOBLE**  
NB-067 Stone



**NOBLE**  
NB-066 Slate Grey



**FEDORA**  
621-036 Dapper



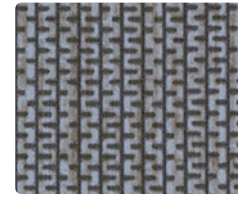
**FEDORA**  
621-026 Pewter



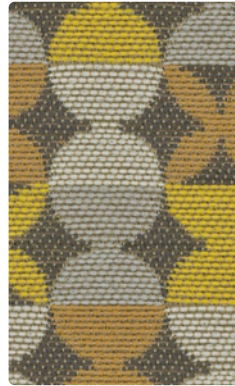
**FEDORA**  
621-006 Bitumen



**ZIP**  
ZP-016 Haze



**ZIP**  
ZP-026 Storm



**TANGO**  
460-002 Sunrise



**TANGO**  
460-006 Flint



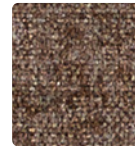
**UTOPIA**  
473-016 Fog



**UTOPIA**  
473-036 Carbon



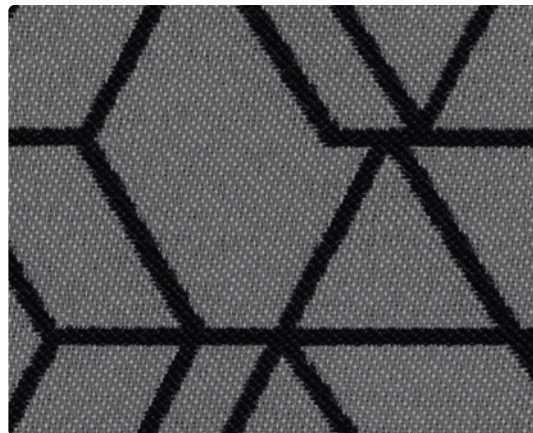
**FEDORA**  
621-017 Fawn



**FEDORA**  
621-000 Mink



**FEDORA**  
621-010 Espresso

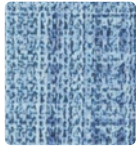


**DENALI**  
334-006 Night

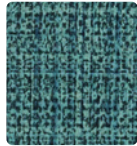
Additional colors are available. Please refer to the Mayer Fabrics website.



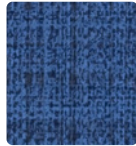
**CONNECT**  
635-004 Cobalt



**LYRIC**  
LI-004 Rain



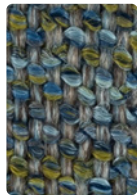
**LYRIC**  
LI-014 River



**LYRIC**  
LI-024 Azure



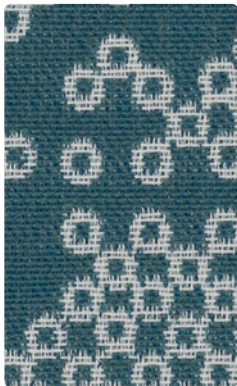
**LANCASTER**  
332-003 Olive



**LANCASTER**  
332-014 Ocean



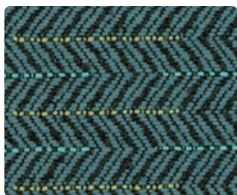
**LANCASTER**  
332-024 Denim



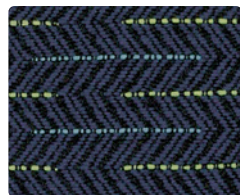
**LOOP**  
637-014 Ocean



**LOOP**  
637-044 Indigo



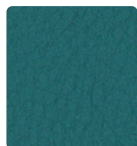
**JIVE**  
461-014 Aegean



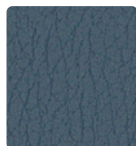
**JIVE**  
461-004 Midnight



**NOBLE**  
NB-013 Citrus



**NOBLE**  
NB-014 Teal



**NOBLE**  
NB-024 Blue Fog



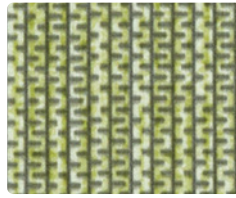
**FEDORA**  
621-013 Citron



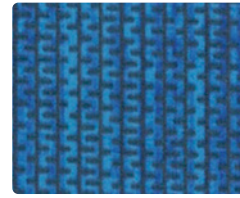
**FEDORA**  
621-043 Aquamarine



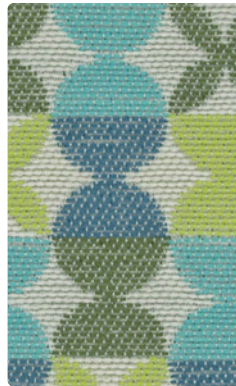
**FEDORA**  
621-014 Indigo



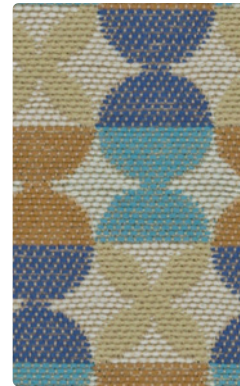
**ZIP**  
ZP-003 Spring



**ZIP**  
ZP-034 Cobalt



**TANGO**  
460-013 Limeade



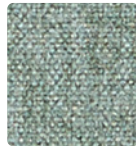
**TANGO**  
460-024 Surfside



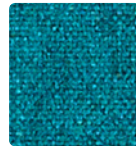
**UTOPIA**  
473-024 Capri



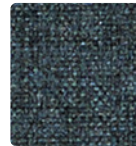
**UTOPIA**  
473-004 Twilight



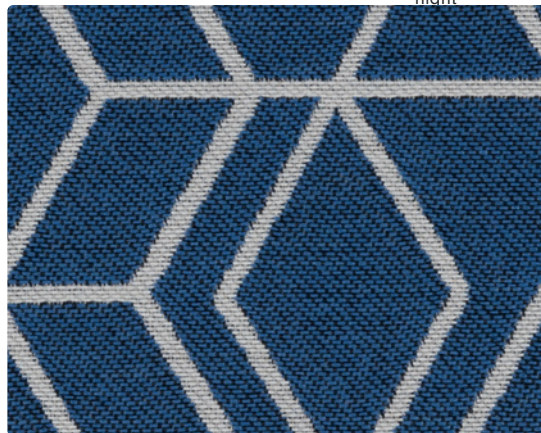
**FEDORA**  
621-033 Opal



**FEDORA**  
621-053 Aegean



**FEDORA**  
621V-004 Mid-  
night



**DENALI**  
334-004 Regal Blue

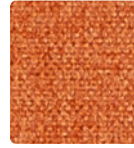
Additional colors are available. Please refer to the Mayer Fabrics website.



**CONNECT**  
635-024 Admiral



**FEDORA**  
621-002 Topaz



**FEDORA**  
621-019 Tangelo



**FEDORA**  
621-011 Tomato



**ZIP**  
ZP-001 Punch



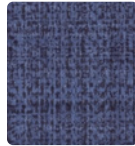
**ZIP**  
ZP-015 Aubergine



**LYRIC**  
LI-007 Birch



**LYRIC**  
LI-001 Cherry



**LYRIC**  
LI-034 Bluebell



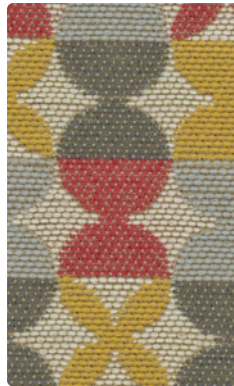
**LANCASTER**  
332-007 Alabaster



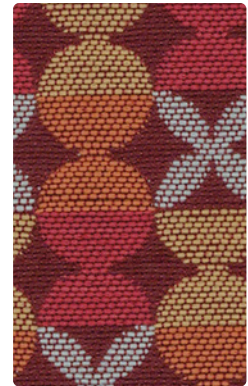
**LANCASTER**  
332-001 Cardinal



**LANCASTER**  
332-000 Driftwood



**TANGO**  
460-011 Coral



**TANGO**  
460-001 Sangria



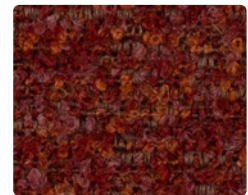
**LOOP**  
637-001 Tomato



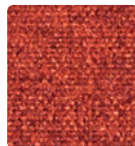
**LOOP**  
637-005 Plum



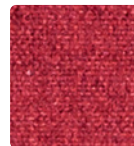
**UTOPIA**  
473-009 Autumn



**UTOPIA**  
473-001 Flare



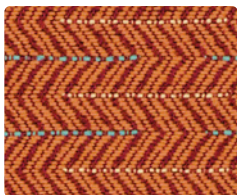
**FEDORA**  
621-009 Persimmon



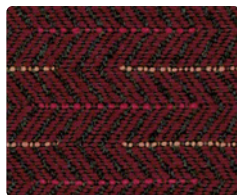
**FEDORA**  
621-001 Ruby



**FEDORA**  
621-008 Plum



**JIVE**  
461-009 Mango



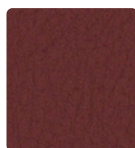
**JIVE**  
461-001 Bordeaux



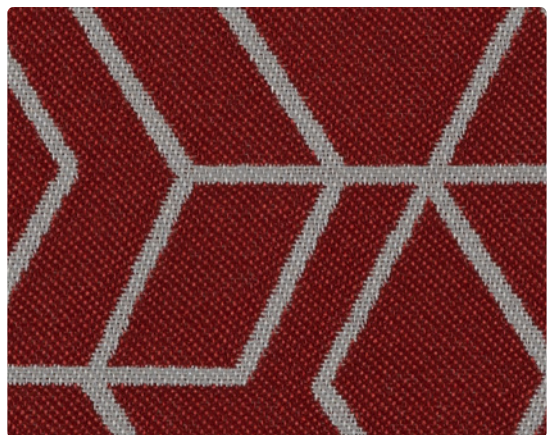
**NOBLE**  
NB-002 Dijon



**NOBLE**  
NB-009 Apricot



**NOBLE**  
NB-008 Sangria



**DENALI**  
334-001 Crimson

Additional colors are available. Please refer to the Mayer Fabrics website.

# TECHNICAL INFORMATION

Pattern 54"	Content and Backing	Certifications	Weight/ Linear Yd.	Pattern Repeat	Finish	Abrasion Wyzenbeek	Light-Fastness	Flammability	Cleaning Code
<b>CONNECT</b> <i>Directional</i>	100% Post-Consumer Recycled Polyester Backing: Acrylic	GREENGUARD Gold	18.848 oz.	7.25" H, 10.75" V	Stain Repellent - PFAS Free	100,000 <sup>^</sup> Double Rubs	40 hours	Cal. 117-2013 NFPA 260/UFAC Class 1	WS, BC
<b>DENALI</b> <i>Directional</i>	100% Post-Consumer Recycled Polyester (52% from SEAQUAL®YARN) Backing: Acrylic	GREENGUARD Gold	12.35 oz.	7.1875" H, 5.25" V	Stain Repellent – PFAS Free	100,000 <sup>^</sup> Double Rubs	40 hours	Cal. 117-2013 NFPA 260/UFAC Class 1	WS, BC
<b>FEDORA</b> <i>Directional</i> <i>Multi-use*</i>	100% Polyester Backing: Polyester	GREENGUARD Gold	17.2 oz.	None	Stain Repellent – PFAS Free	100,000 <sup>^</sup> Double Rubs	40 hours	Cal. 117-2013 NFPA 260/UFAC Class 1 ASTM E84 (Unadhered) Class 1 or A	W
<b>JIVE</b> <i>Directional</i>	100% Polyester Backing: Acrylic	GREENGUARD Gold	12.43 oz.	1.2" H, 0.4" V	Stain Repellent – PFOA & PFOS Free	82,000 Double Rubs	40 hours	Cal. 117-2013 NFPA 260/UFAC Class 1	S
<b>LANCASTER</b> <i>Directional</i>	97% Solution-Dyed Olefin, 3% Solution-Dyed Polyester Backing: Acrylic	GREENGUARD Gold	21.9 oz.	0.188" H, 0.188" V	Inherently Cleanable	50,000 Double Rubs	40 hours	Cal. 117-2013 NFPA 260/UFAC Class 1	WS, BC, IC
<b>LOOP</b> <i>Directional</i>	100% Post-Consumer Recycled Polyester Backing: Acrylic	GREENGUARD Gold	13.488 oz.	14.5" H, 7.375" V	Stain Repellent - PFAS Free	80,000 Double Rubs	40 hours	Cal. 117-2013 NFPA 260/UFAC Class 1	WS, BC
<b>LYRIC</b>	80% Vinyl - Phthalate Free face, 20% Polyester backing	GREENGUARD	28 oz.	None	Soil & Stain Resistant Top Coat with Ink Resistant Technology	1,300,000 <sup>^</sup> Double Rubs	650 hours	Cal. 117-2013 NFPA 260/UFAC Class 1	W, BC, CFC
<b>NOBLE</b>	78% Vinyl face, 22% Polyester backing	GREENGUARD	30 oz.	None	Soil & Stain Resistant Top Coat with Ink Resistant Technology	100,000 <sup>^</sup> Double Rubs	300 hours	Cal. 117-2013 NFPA 260/UFAC Class 1 FMVSS 302	BC, CFC
<b>TANGO</b> <i>Directional</i>	100% Polyester Backing: Acrylic	GREENGUARD Gold	17.27 oz.	4.8" H, 4.8" V	Stain Repellent - PFOA & PFOS Free	80,000 Double Rubs	40 hours	Cal. 117-2013 NFPA 260/UFAC Class 1	S
<b>UTOPIA</b> <i>Directional</i>	88% Polyester, 7% Acrylic, 3% Polyurethane, 2% Silicone Backing: Fluid Barrier (Supreen) Polyurethane	GREENGUARD Gold	24.5 oz.	None	Supreen (Silicone) PFAS Free	100,000 <sup>^</sup> Double Rubs	40 hours	Cal. 117-2013 NFPA 260/UFAC Class 1	WS, BC
<b>ZIP</b> <i>Directional</i>	78% Vinyl - Phthalate Free face, 22% Polyester backing	GREENGUARD	26 oz.	None	Soil & Stain Resistant Top Coat	100,000 <sup>^</sup> Double Rubs	1000 hours	Cal. 117-2013 NFPA 260/UFAC Class 1	BC, CFC

## REDUCED ENVIRONMENTAL IMPACT

These products are GREENGUARD Certified or GREENGUARD Gold Certified for low chemical and particle emissions to UL standard UL 2818 and may contribute to LEED certification.

## CARE AND CLEANING INFORMATION

S: Solvent W: Water-Based Cleaner WS: Water/Solvent Cleaner IC: Inherently Cleanable

CFC: Coated Fabrics Cleaning – Refer to Mayer website for complete cleaning info.

BC: Bleach Cleanable – 1 part bleach, 9 parts water = 10% bleach, 90% water solution. **Do not clean/disinfect fabric for longer than 10 minutes using the 10% bleach solution. Always rinse promptly with clean water after applying the bleach solution. Failure to do so will void any and all warranties.**

## DYE TRANSFER DISCLAIMER

Certain clothing and accessory dyes (such as those used on denim jeans) may migrate to lighter colors. This phenomenon is increased by humidity and temperature and is irreversible. Mayer Fabrics will not assume responsibility for dye transfer caused by external contaminants. Please check compatibility when using this product in combination with painted or varnished surfaces.

## ADDITIONAL INFORMATION

<sup>^</sup>Abrasion test results exceeding ACT Performance Guidelines are not an indicator of product lifespan. Multiple factors affect fabric durability and appearance retention.

\*A multi-use fabric that can be used for upholstery, panels, wrapped walls, and acoustic.


Warranty: Please refer to the Mayer website for warranty information by pattern.

Custom Colors: All patterns can be custom colored. Minimum yardage applies.

Digital Swatch Card Color Matching: Due to color variations on different monitors and color printers, actual swatch colors may vary slightly. Please request a memo sample from Mayer Fabrics to ensure proper color representation.

Complete and current product information available at [mayerfabrics.com](http://mayerfabrics.com).

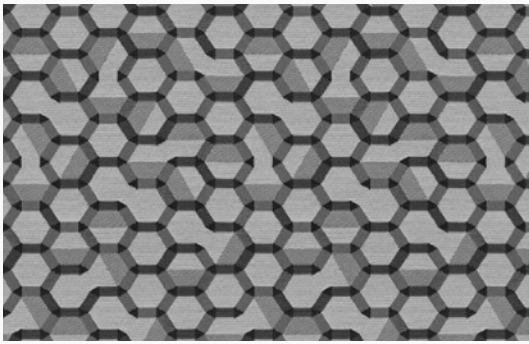
## Fedora

 This 100% polyester fabric is included in the Underwriter's Laboratory Fabric Recognition Program. Additional testing of this U.L. recognized component is not required on approved panels from participating manufacturers.

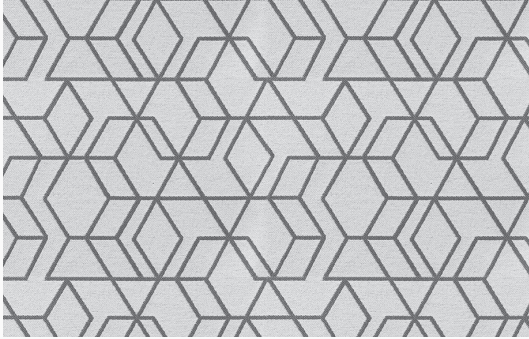


These fabrics meet or exceed these ACT performance guidelines.

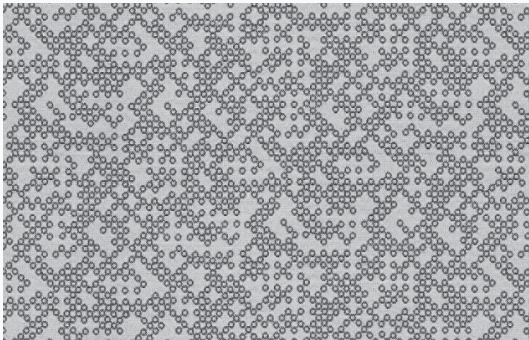
©2024  
RTLCD MF0224



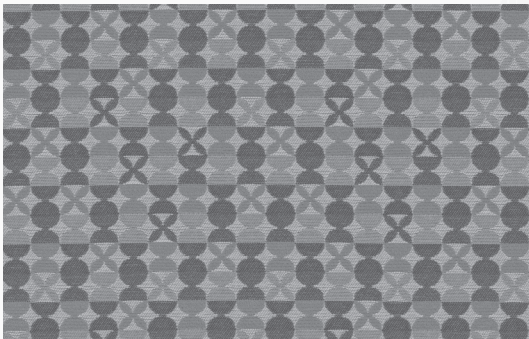
CONNECT



TANGO



LOOP



TANGO



**RT LONDON®**

T 877.613.2012 F 616.364.1131  
eservice@rtlondon.com rtlondon.com

**MAYER FABRICS**

T 800.428.4415 mayerfabrics.com  
500 S. Kitley Ave. Indianapolis, IN 46219